



REDBROOK
AN A.D. MAKEPEACE COMMUNITY

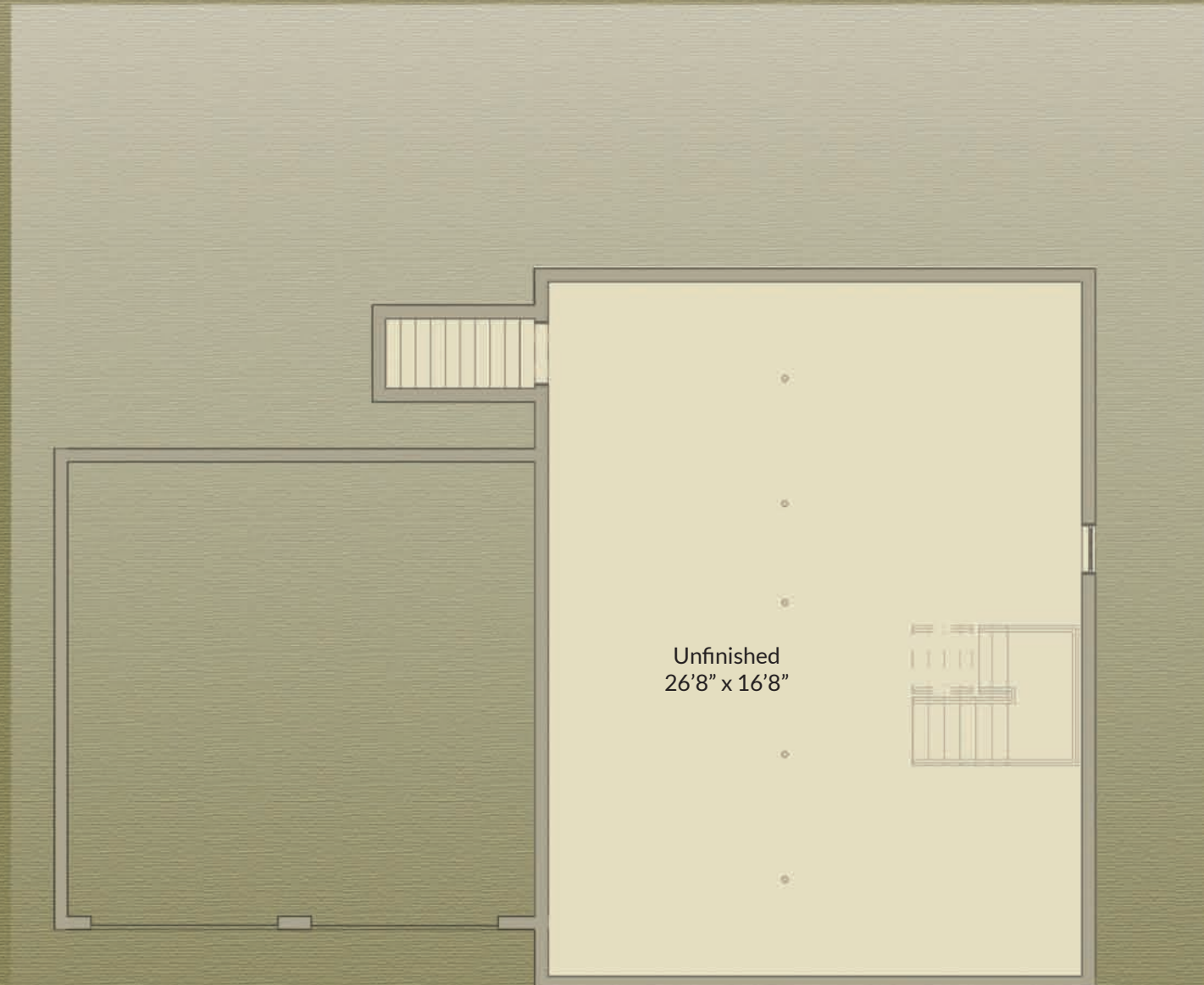
WHITE PINE II

2,016 SF – 3 Bedroom / 2.5 Bath / Home Office



Basement

543 SF



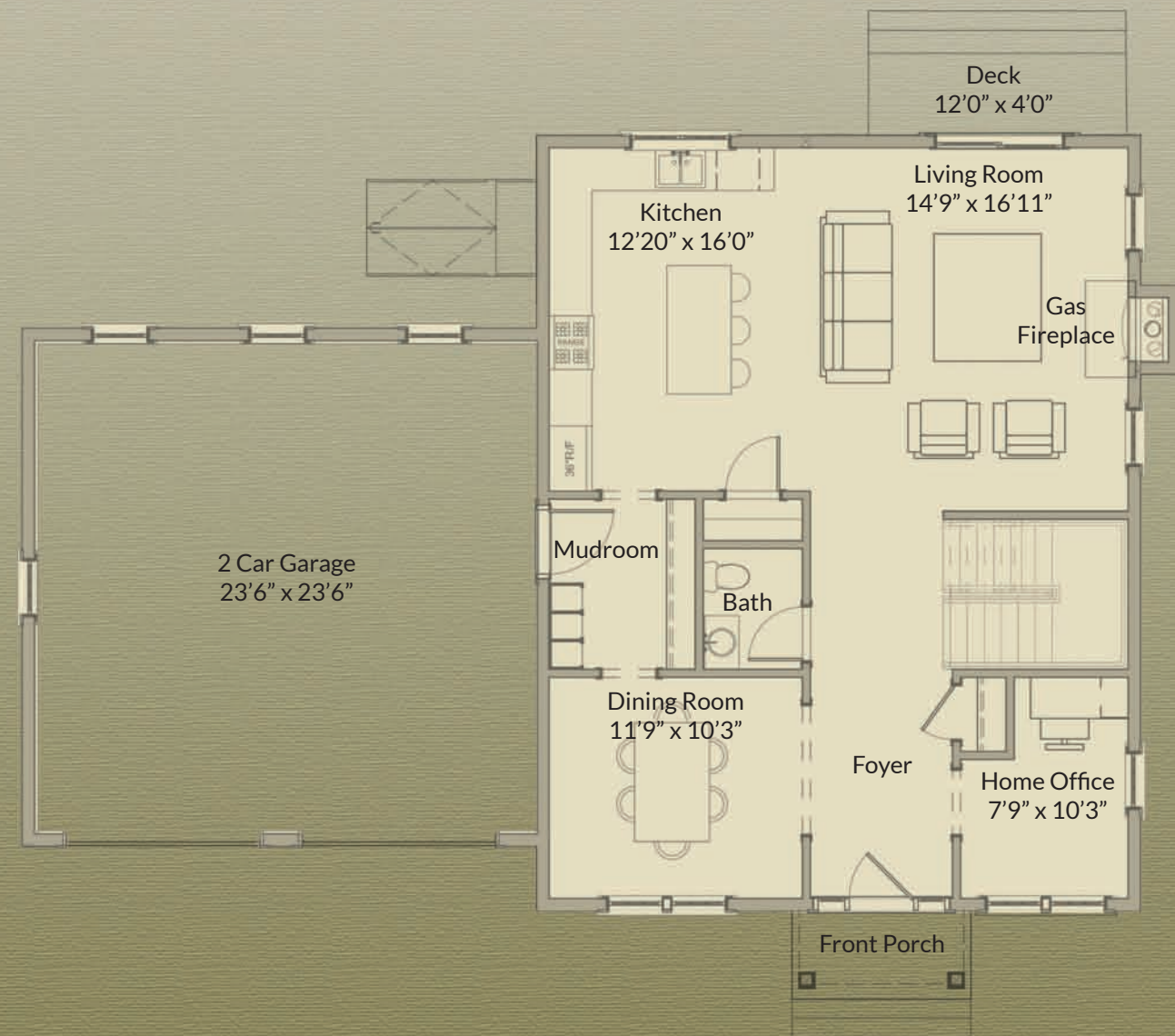
- Two-story cottage style home with two-car garage
- Private home office off front entry
- Large kitchen open to living room with stone fireplace
- Back deck off living room
- Spacious separate dining room
- First floor powder room
- Second floor primary bedroom with walk-in closet
- Primary bath with dual vanities and linen closet
- Two additional bedrooms upstairs with ample closets
- Second floor full bath and laundry closet
- Full lower level (walk-out options)

The dimensions, size, configuration and other information on these floor plans are subject to change without notice and are meant to be illustrative only. All dimensions and square feet are approximate.

Homes Designed and Built by E.J. Pontiff

First Floor

1,008 SF



Second Floor

1,008 SF



The dimensions, size, configuration and other information on these floor plans are subject to change without notice and are meant to be illustrative only. All dimensions and square feet are approximate.