



REDBROOK
AN A.D. MAKEPEACE COMMUNITY

THE MAYFLOWER

1,577 SF — 2 Bedroom / 2 Bath



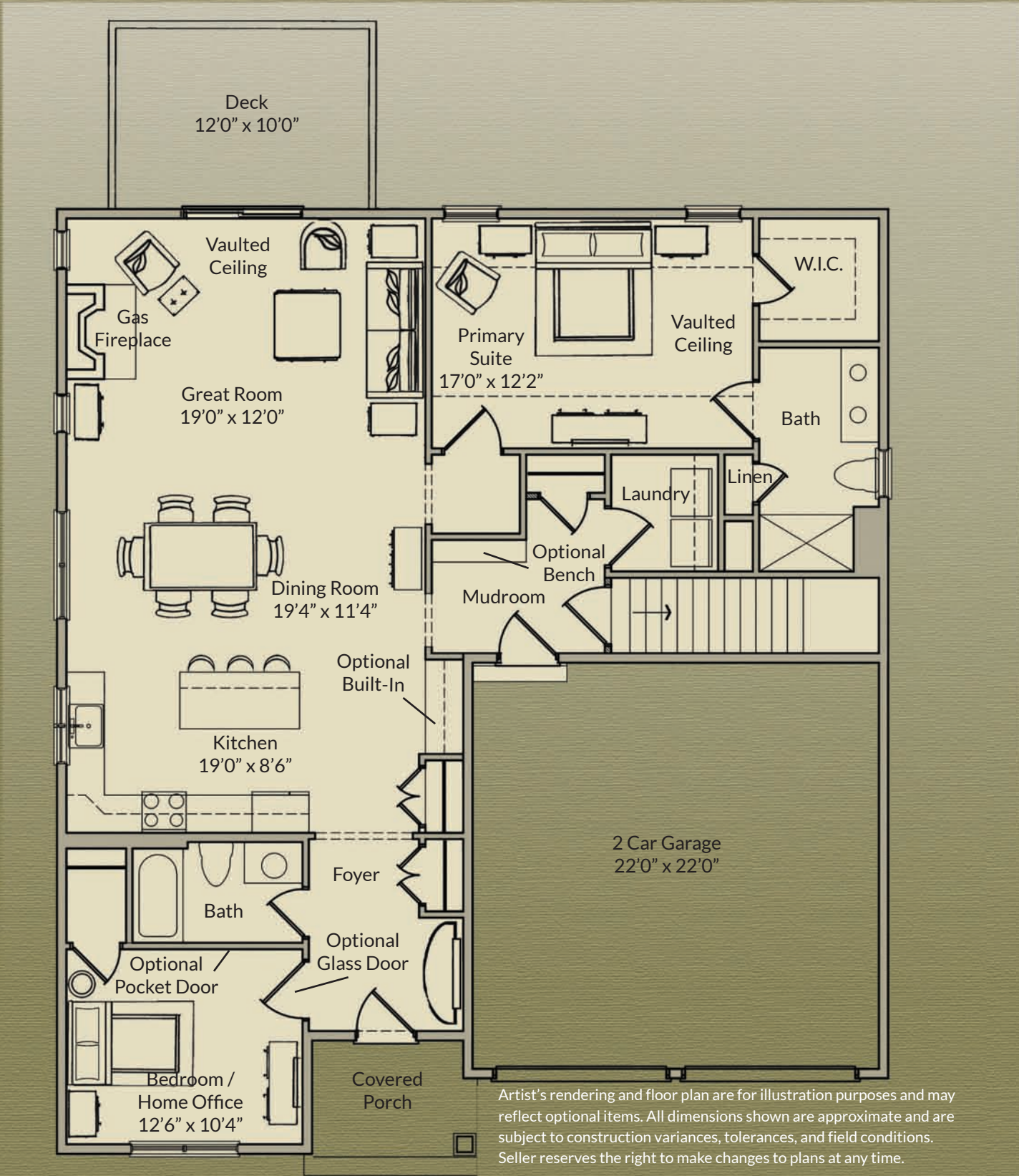
*Artist's rendering

- Single-level home with covered front entry
- Two-car garage
- Open-concept kitchen, dining, & great room with vaulted ceiling
- Quartz countertops & large island for style and function
- Spacious mudroom & laundry with garage entry
- Generous vaulted primary suite with walk-in closet
- Dual sinks in the primary bath
- Guest bedroom with conveniently located full bath
- Full walkout basement with opportunity for future finish

Designed and Built by The Stabile Companies

First Floor

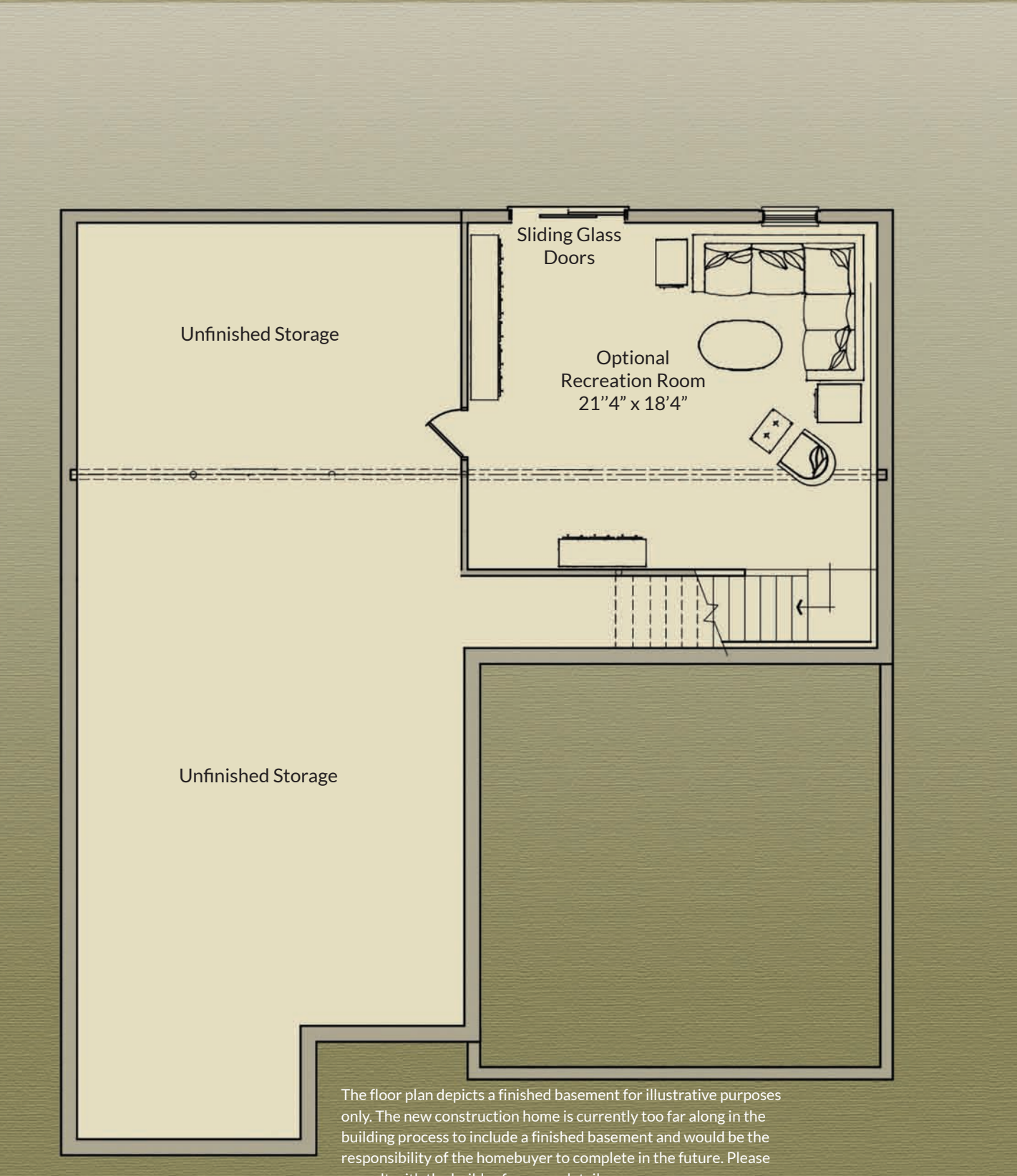
+1,577 SF



Artist's rendering and floor plan are for illustration purposes and may reflect optional items. All dimensions shown are approximate and are subject to construction variances, tolerances, and field conditions. Seller reserves the right to make changes to plans at any time.

Lower Level

+504 SF



The floor plan depicts a finished basement for illustrative purposes only. The new construction home is currently too far along in the building process to include a finished basement and would be the responsibility of the homebuyer to complete in the future. Please consult with the builder for more details.