



REDBROOK
AN A.D. MAKEPEACE COMMUNITY

THE MAYFLOWER

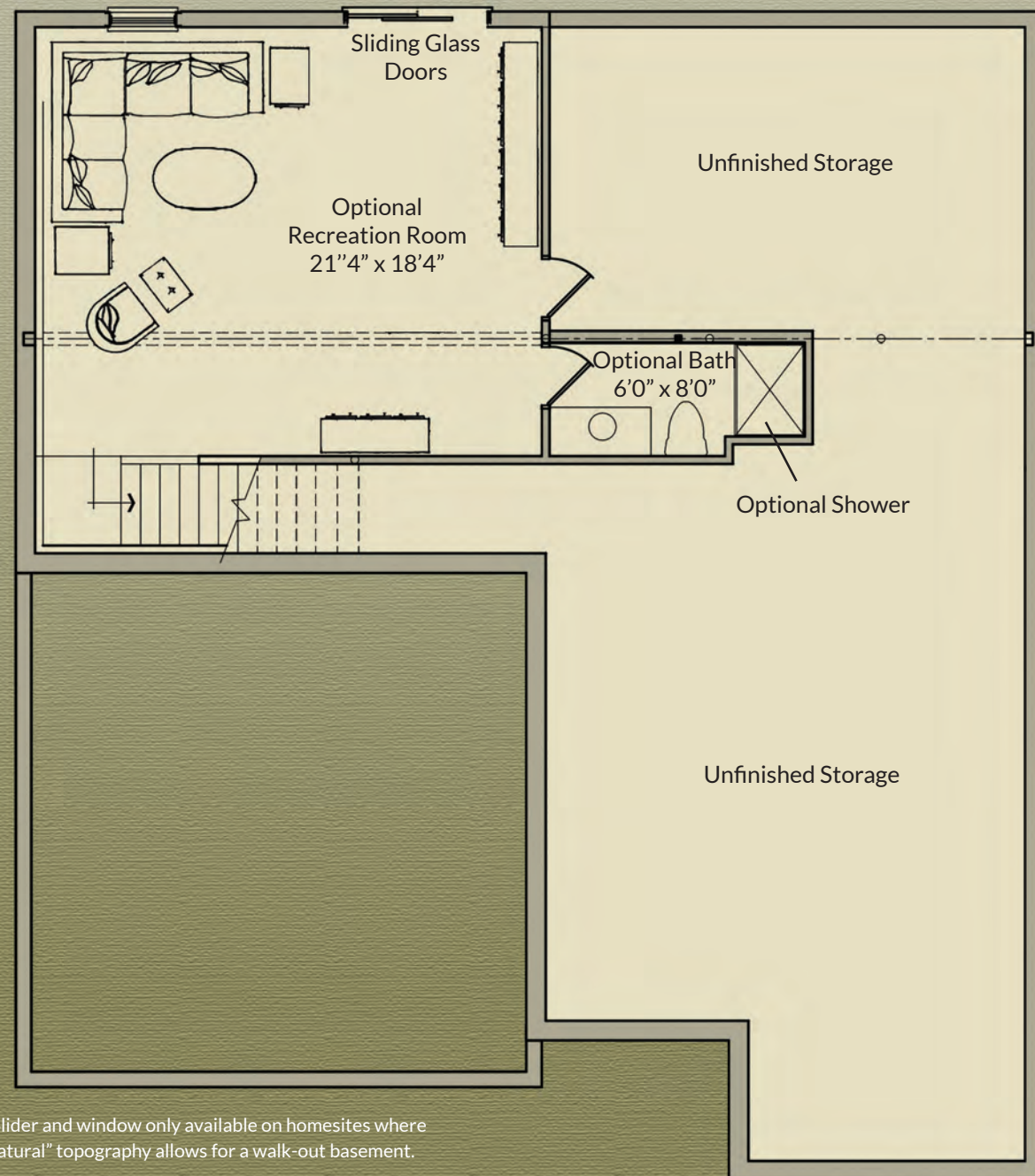
1,577 SF – 2 Bedroom / 2 Bath



*Artist's rendering

Lower Level

+504 SF



- Single level home with covered front entry
- Two-Car Garage
- Spacious kitchen with island opens to dining area and great room
- Convenient mudroom and laundry with garage entry
- Generous primary suite with walk-in closet
- Guest bedroom with full bath
- Full basement with option to finish

* Slider and window only available on homesites where "natural" topography allows for a walk-out basement.

Designed and Built by The Stabile Companies

First Floor

+1,577 SF



* Artist's rendering and floor plan are for illustration purposes and may reflect optional items. All dimensions shown are approximate and are subject to construction variances, tolerances, and field conditions. Seller reserves the right to make changes to plans at any time.

First Floor - 4 Season Room Option

+1,727 SF



* Artist's rendering and floor plan are for illustration purposes and may reflect optional items. All dimensions shown are approximate and are subject to construction variances, tolerances, and field conditions. Seller reserves the right to make changes to plans at any time.