



REDBROOK

AN A.D. MAKEPEACE COMMUNITY

CARRIAGE HOME

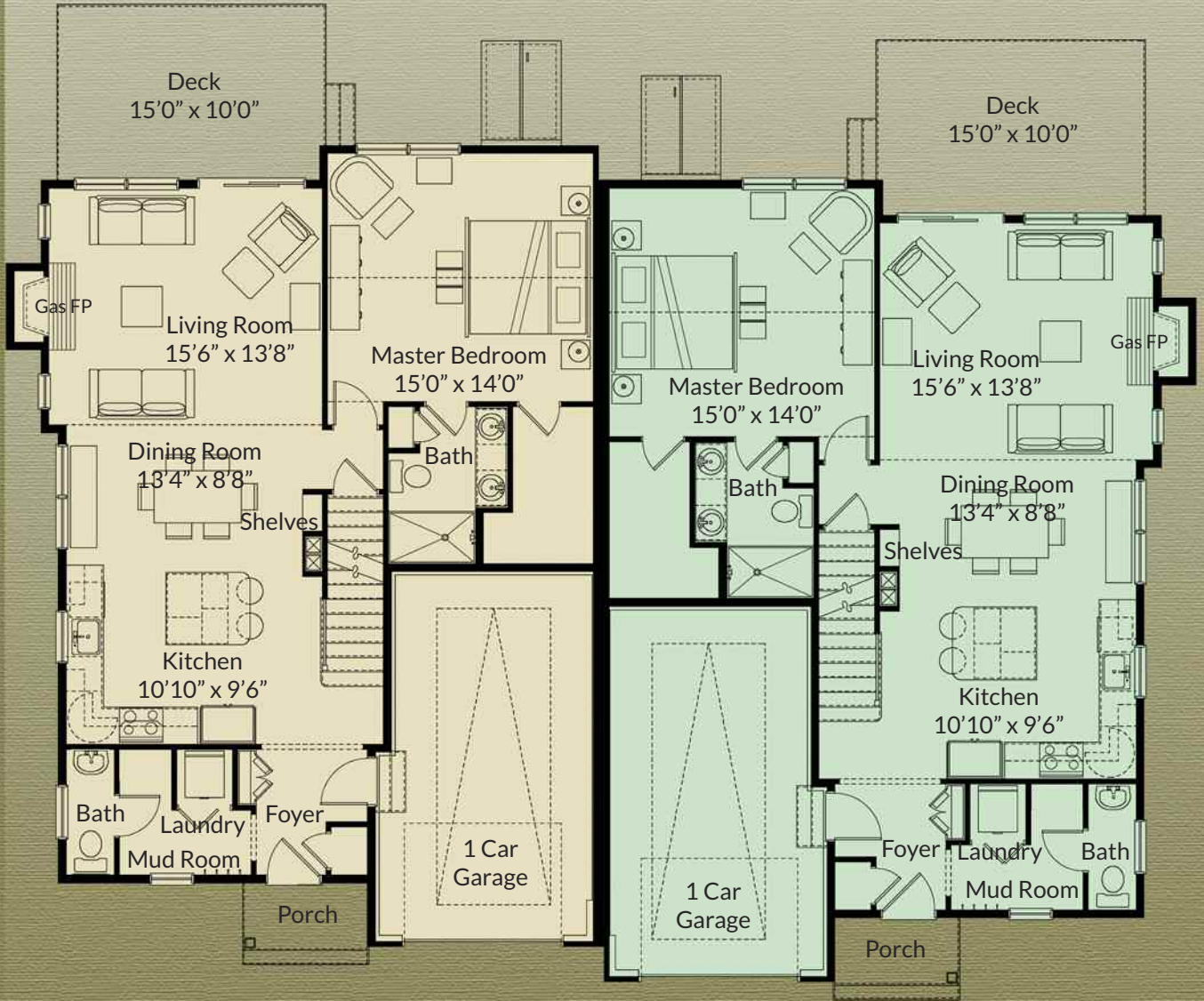
1,641 SF – 3 Bedroom / 2.5 Bath



- Traditionally build carriage home
- Covered front entry and one car garage
- Mudroom with laundry closet
- Private powder room off of mudroom
- Spacious kitchen with island open to dining room and inviting living area
- Large first floor master suite with walk in closet
- Additional two bedrooms second floor with shared bathroom, both with walk in closets, one with room for a seating area
- Full lower level (walk out options)

First Floor

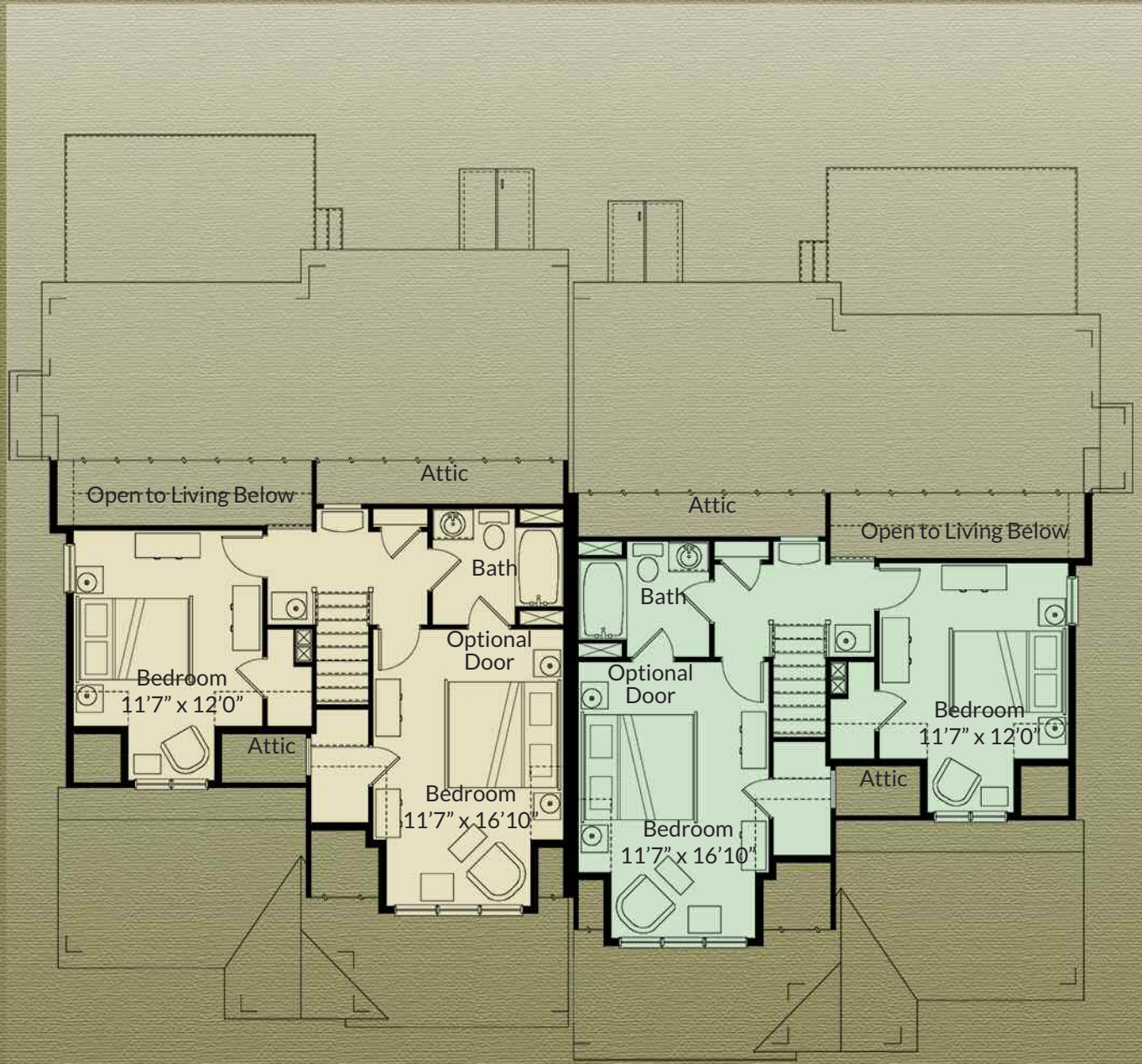
+1,078 SF



The dimensions, size, configuration and other information on these floor plans are subject to change without notice and are meant to be illustrative only. All dimensions and square feet are approximate.

Second Floor

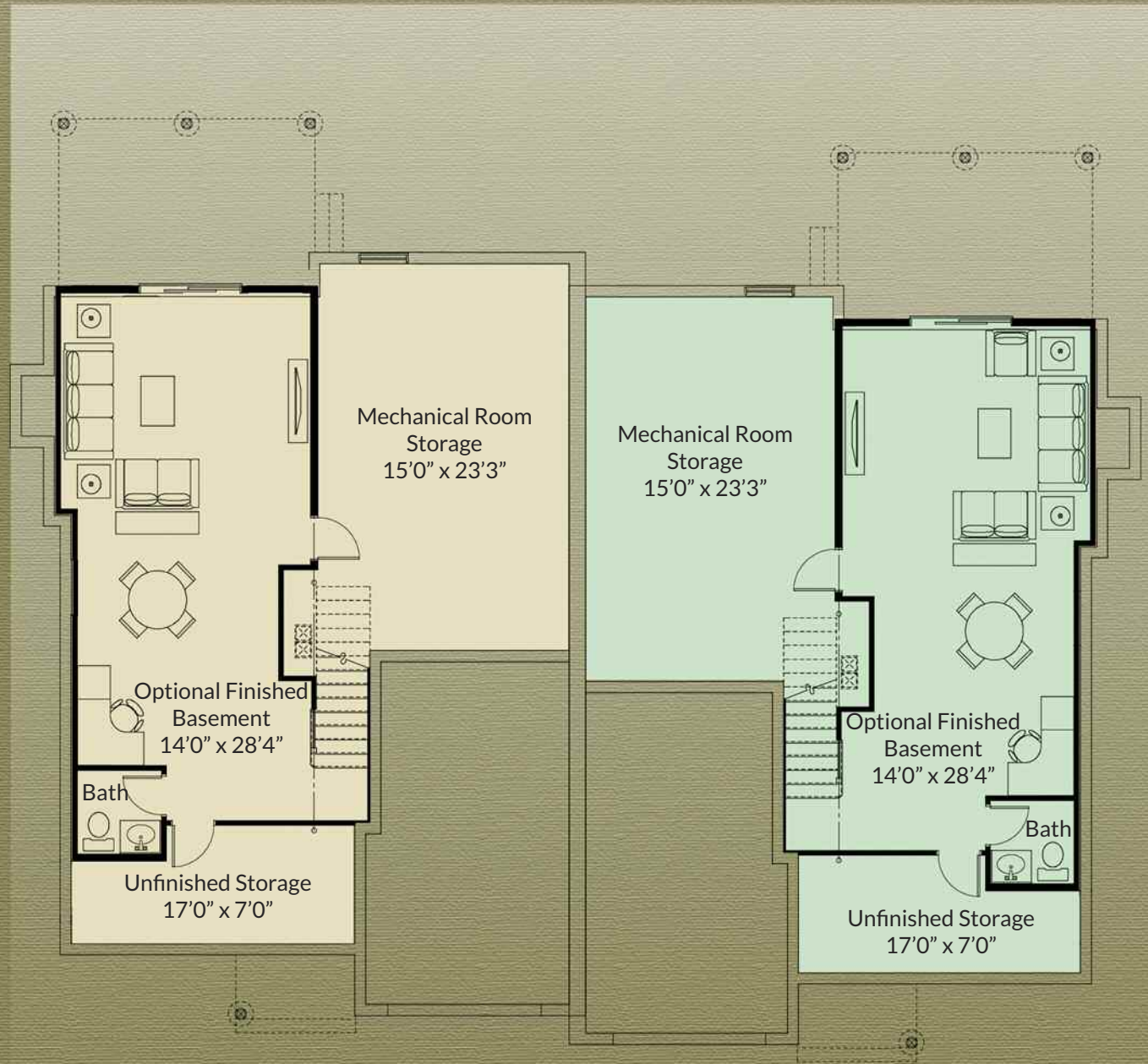
+563 SF



The dimensions, size, configuration and other information on these floor plans are subject to change without notice and are meant to be illustrative only. All dimensions and square feet are approximate.

Optional Finished Basement

+468 SF



The dimensions, size, configuration and other information on these floor plans are subject to change without notice and are meant to be illustrative only. All dimensions and square feet are approximate.