



REDBROOK
AN A.B. MAREKSPACE COMMUNITY

THE RUBY II

1,884 SF – 2 Bedroom / 2.5 Bath / Study



THE TOPAZ II

1,708 SF – 2 Bedroom / 2.5 Bath

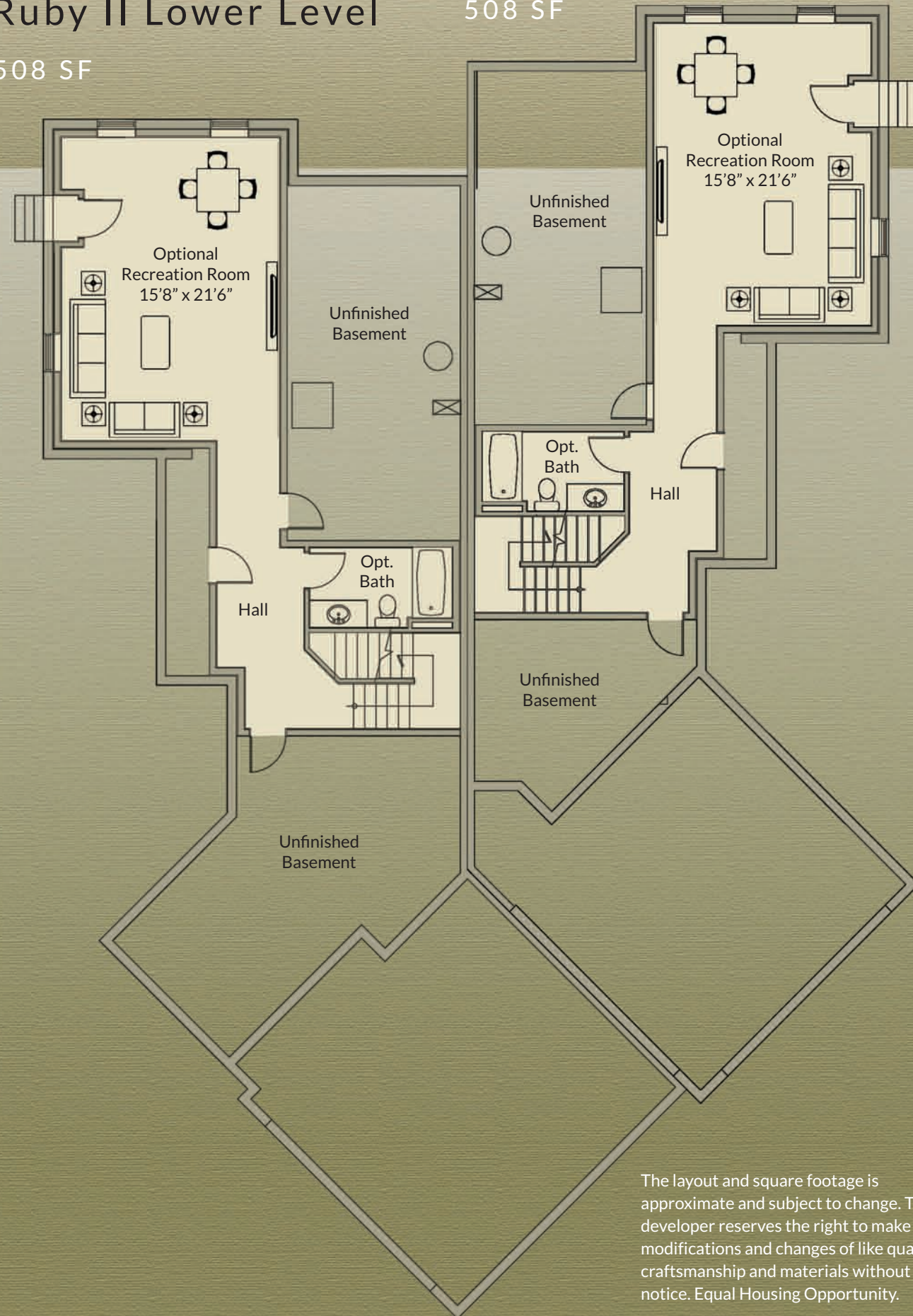


Topaz II Lower Level

508 SF

Ruby II Lower Level

508 SF



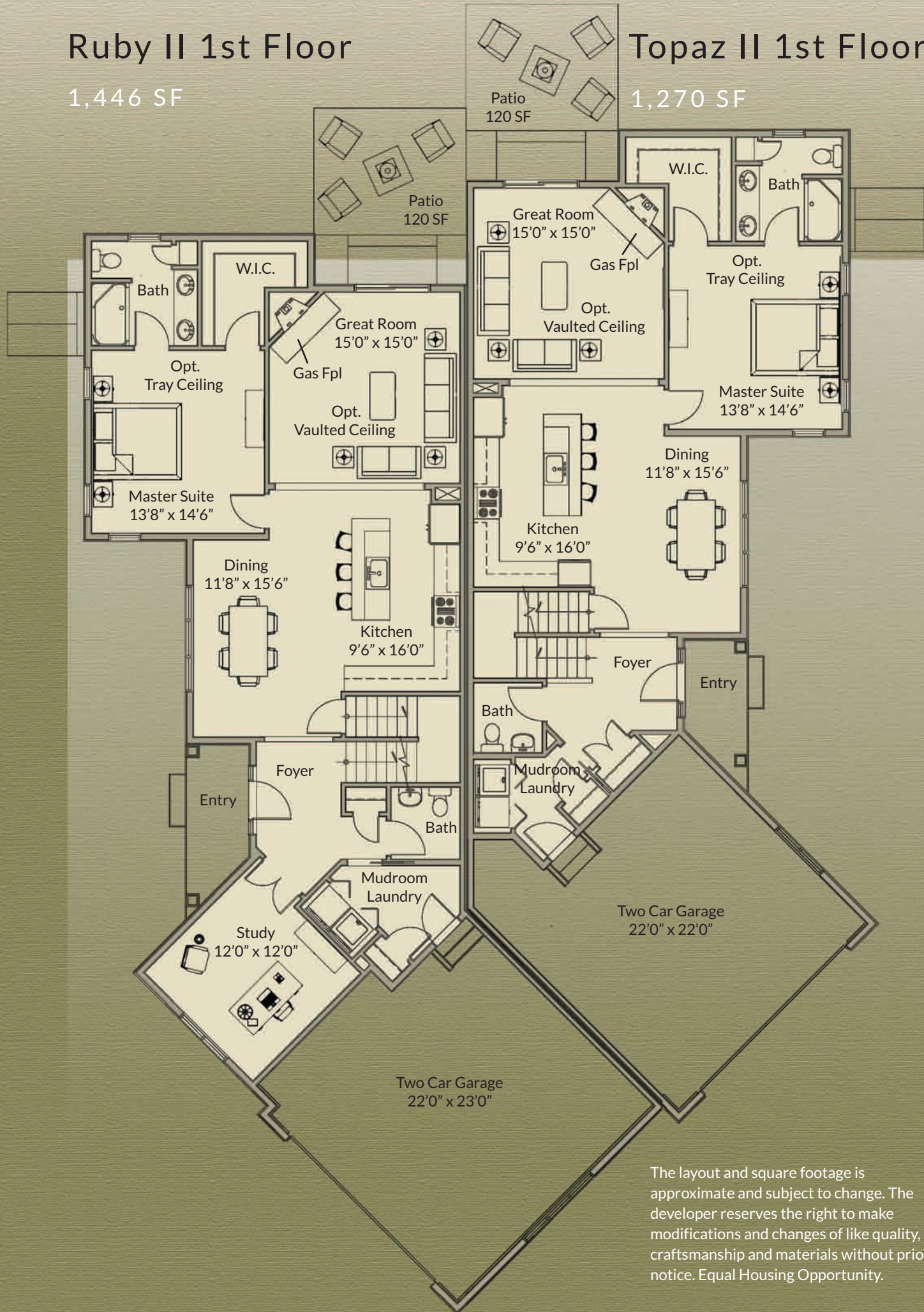
The layout and square footage is approximate and subject to change. The developer reserves the right to make modifications and changes of like quality, craftsmanship and materials without prior notice. Equal Housing Opportunity.

- Two fresh floor plans to match your personal style
- Select two-bedroom or two-bedroom plus study
- New England Cottage-style architecture
- Covered front porch and two-car garage
- Main-level master suite with walk-in closet
- Kitchen island with separate dining space
- Spacious great room with hardwood floors
- Second-level guest suite with private bath and loft
- Mudroom, laundry and main-level powder room
- Optional finished basement

Designed and built by Whitman Homes

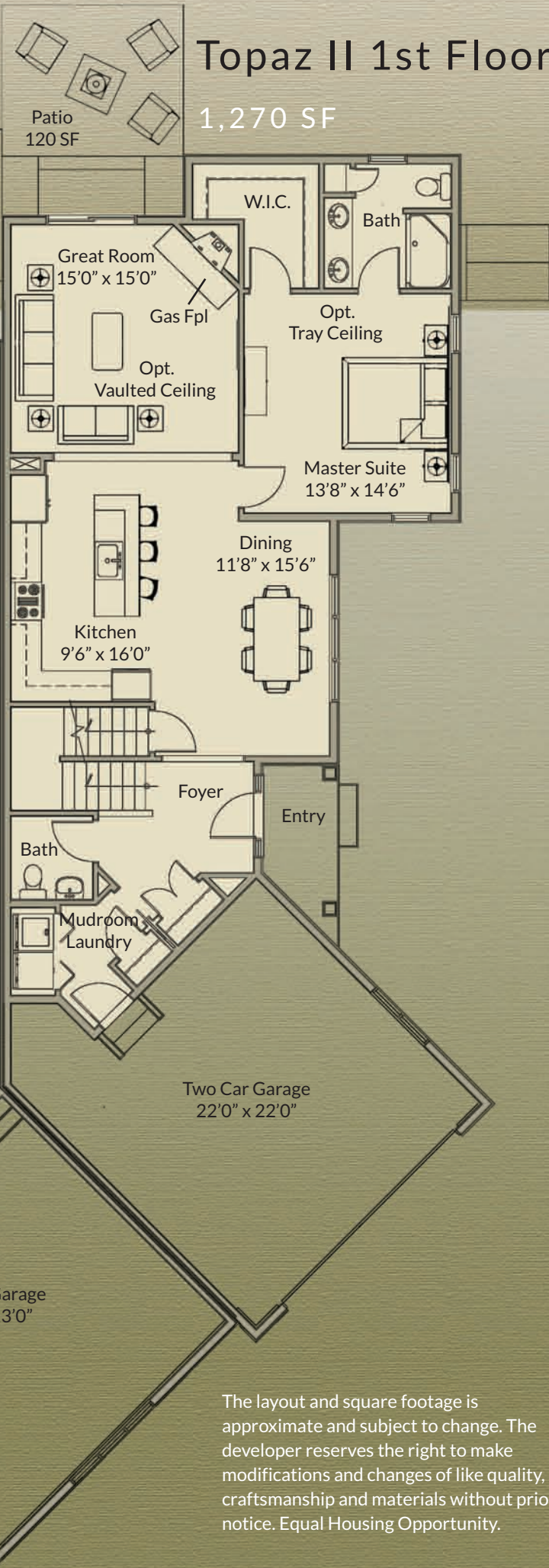
Ruby II 1st Floor

1,446 SF



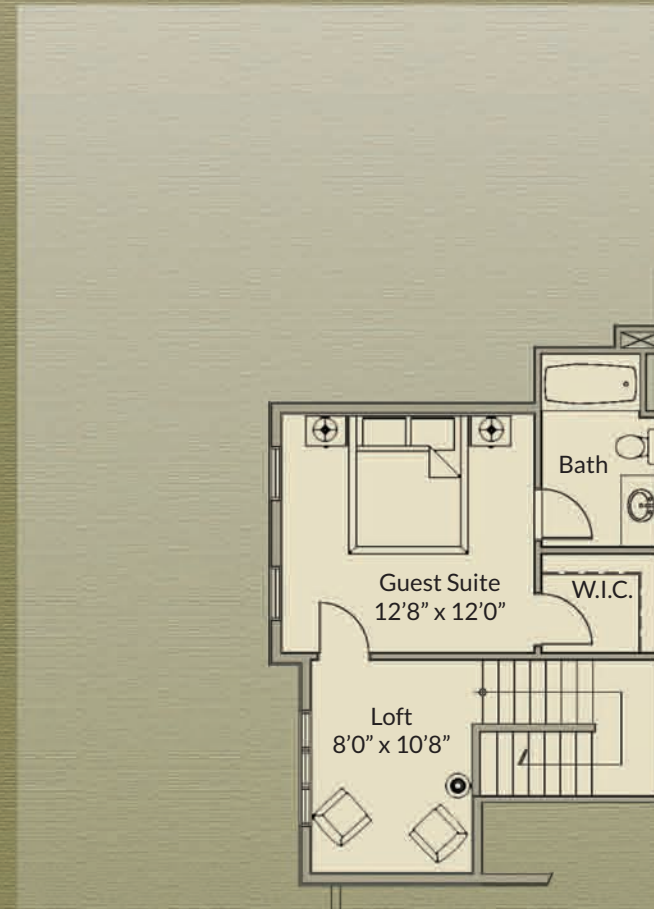
Topaz II 1st Floor

1,270 SF



Ruby II 2nd Floor

438 SF



Topaz II 2nd Floor

438 SF



The layout and square footage is approximate and subject to change. The developer reserves the right to make modifications and changes of like quality, craftsmanship and materials without prior notice. Equal Housing Opportunity.

The layout and square footage is approximate and subject to change. The developer reserves the right to make modifications and changes of like quality, craftsmanship and materials without prior notice. Equal Housing Opportunity.