

The Sage

2 Bedroom / 2.5 Bath 1,624 SF Total

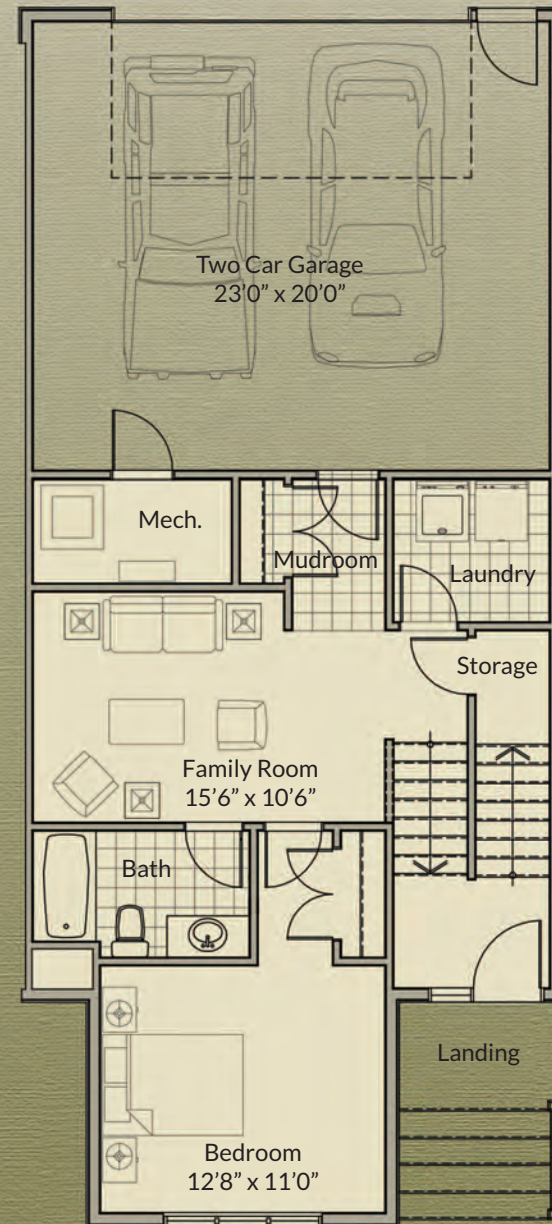
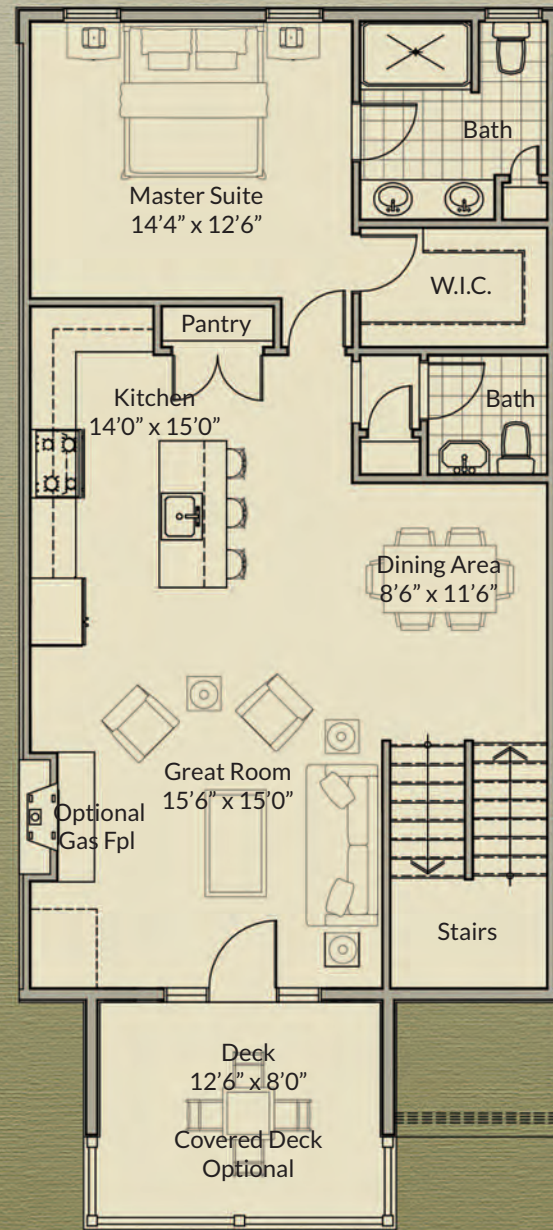


REDBROOK
AN A.D. MAKEPEACE COMMUNITY

THE TOWNHOMES ON THE GREEN

Main Level +1,056 SF

Garden Level +568 SF



- New England cottage-style architecture
- Open kitchen with center island and full pantry
- Separate dining area
- Generous master suite with large walk-in closet
- Garden level family room
- Separate laundry and mud rooms
- Maintenance-free landscaping
- Two car garage

The layout and square footage is approximate and subject to change. The developer reserves the right to make modifications and changes of like quality, craftsmanship and materials without prior notice. Equal Housing Opportunity.

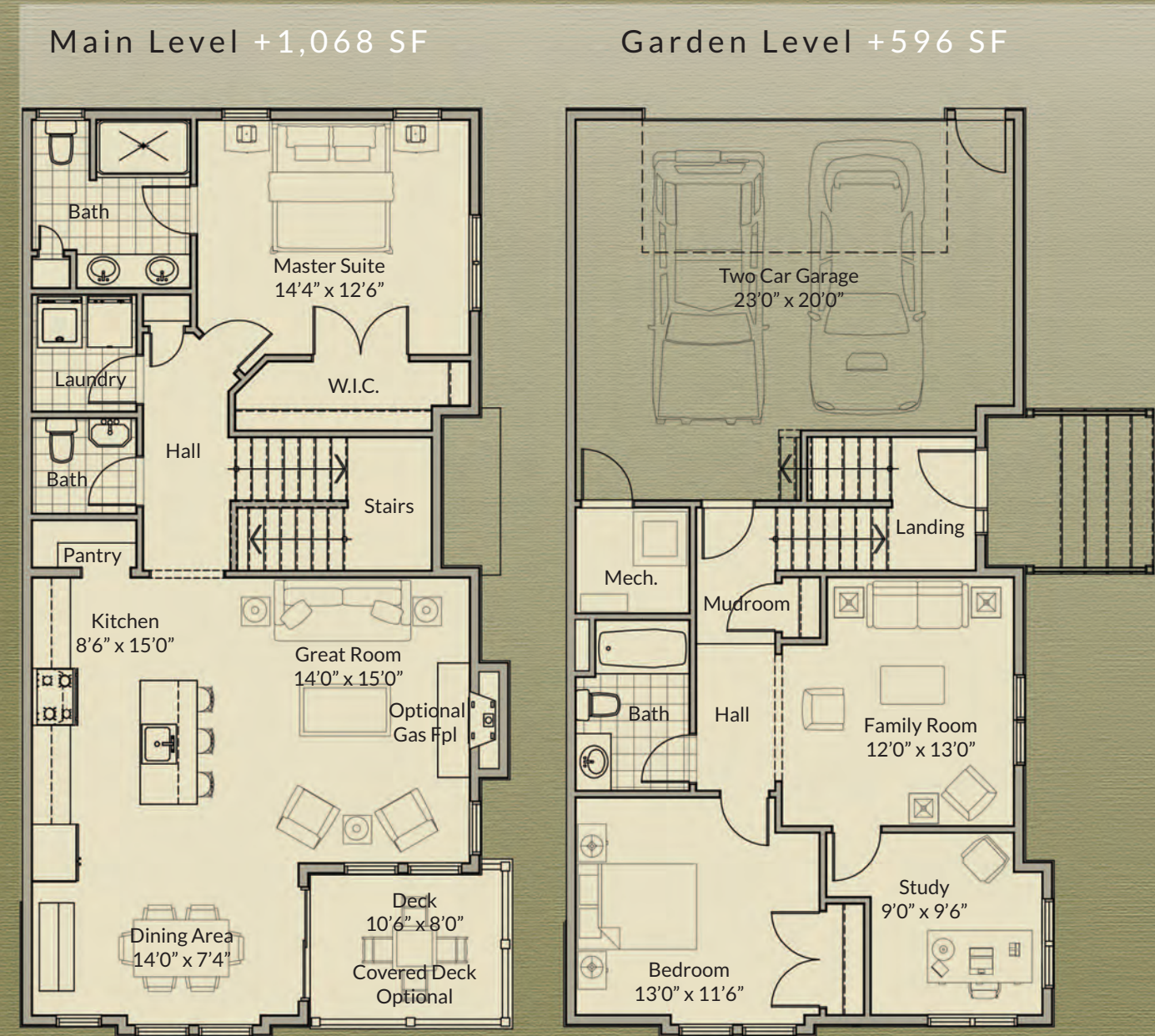
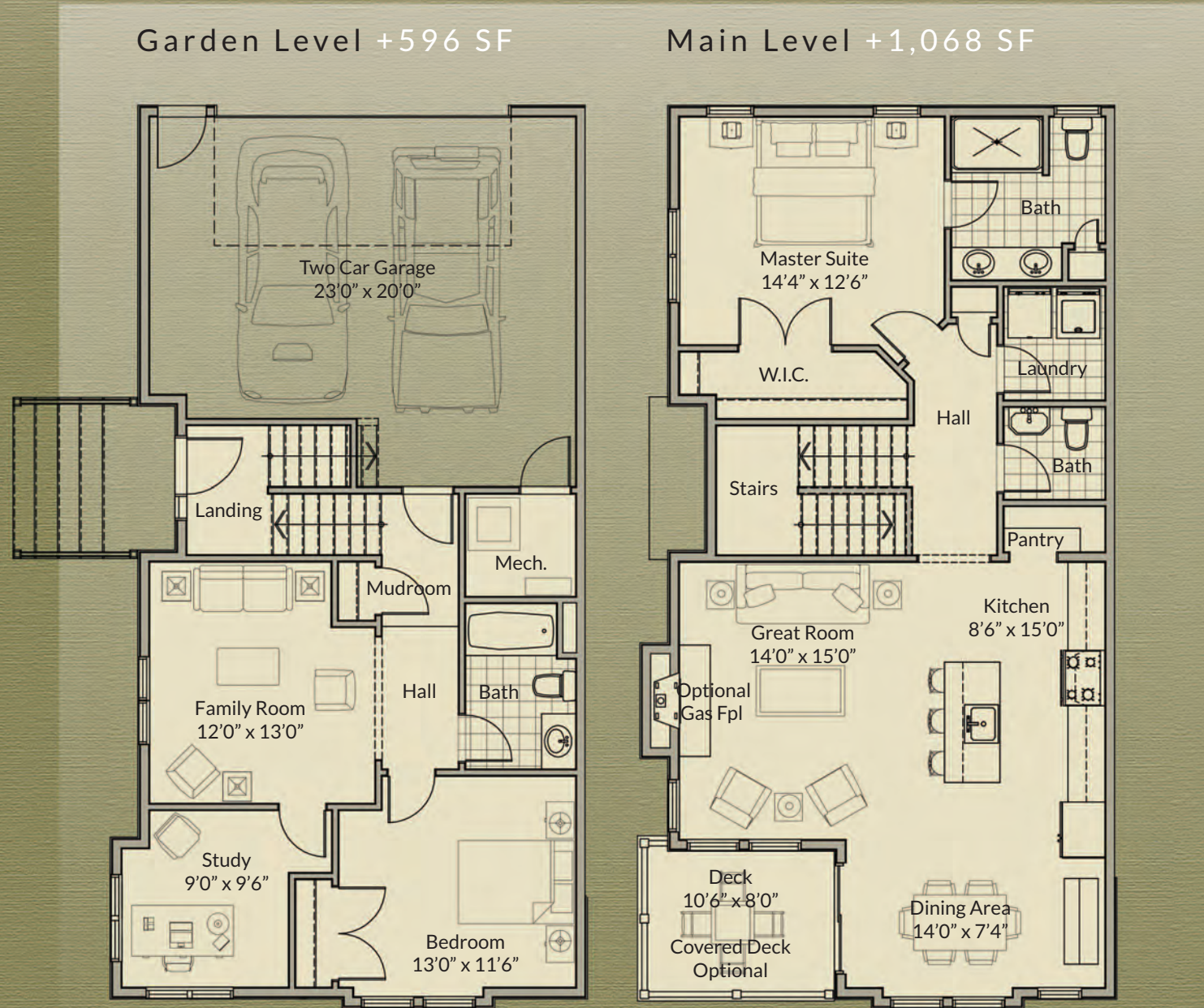


The Emerald Left

2 Bedroom / 2.5 Bath / Plus Study 1,664 SF Total

The Emerald Right

2 Bedroom / 2.5 Bath / Plus Study 1,664 SF Total



The layout and square footage is approximate and subject to change. The developer reserves the right to make modifications and changes of like quality, craftsmanship and materials without prior notice. Equal Housing Opportunity.



The layout and square footage is approximate and subject to change. The developer reserves the right to make modifications and changes of like quality, craftsmanship and materials without prior notice. Equal Housing Opportunity.

